



***MULTI-POSITION, VARIABLE-SPEED,
ECM-BASED AIR HANDLER WITH
INTERNAL EEV, COMFORTBRIDGE™
AND INVERTER COMPATIBLE
2 TO 5 TONS***

Contents

Nomenclature 2
 Product Specifications 3
 Dimensions 4
 Airflow Data 5
 Heat Kit Data 6
 Wiring Diagram 7
 Accessories 8



Product Features

- Electronic Expansion Valve (EEV) for cooling and heat pump applications.
- Variable-speed ECM blower motor
- Suitable for operation with inverter-driven products
- Integrated communicating ComfortBridge™ Technology
- Commissioning and diagnostics via on board Bluetooth with the CoolCloud™ phone and tablet application
- Provides constant CFM over a wide range of static pressure conditions independent of duct system
- CFM indicator
- Provides adjustable low CFM for efficient fan-only operation
- All-aluminum evaporator coil
- Fault recall of six most recent faults
- Improved humidity and comfort control
- 3 kW – 25 kW electric heater kits
- AHRI certified; ETL listed
- UL 60335 2-40 Compliant

Cabinet Features

- Cabinet air leakage less than 2.0% at 1.0 inch H₂O when tested in accordance with ASHRAE standard 193
- Cabinet air leakage less than 1.4% at 0.5 inch H₂O when tested in accordance with ASHRAE standard 193
- Horizontal or vertical configuration capabilities
- 21" depth for easier attic access
- DecaBDE-free thermoplastic drain pan with secondary drain connections
- Screw-less sides and back helps to reduce condensation when installed in humid locations
- Foil-faced insulation covers the internal casing to reduce cabinet condensation
- Galvanized, leather grain-embossed finish
- Glue-less cabinet insulation retention
- Tool-less filter access

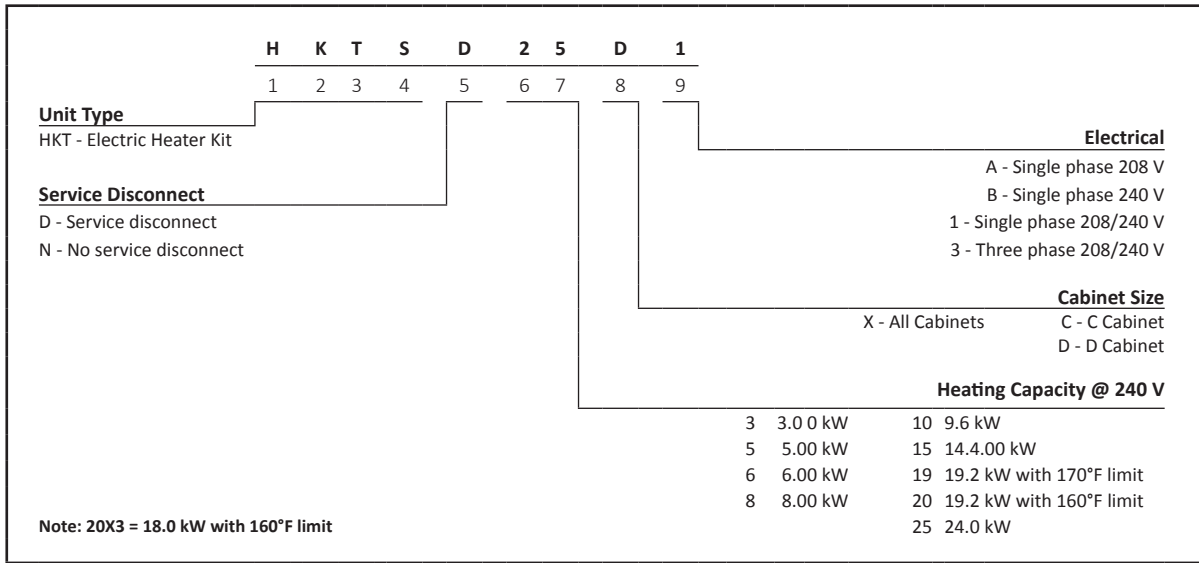
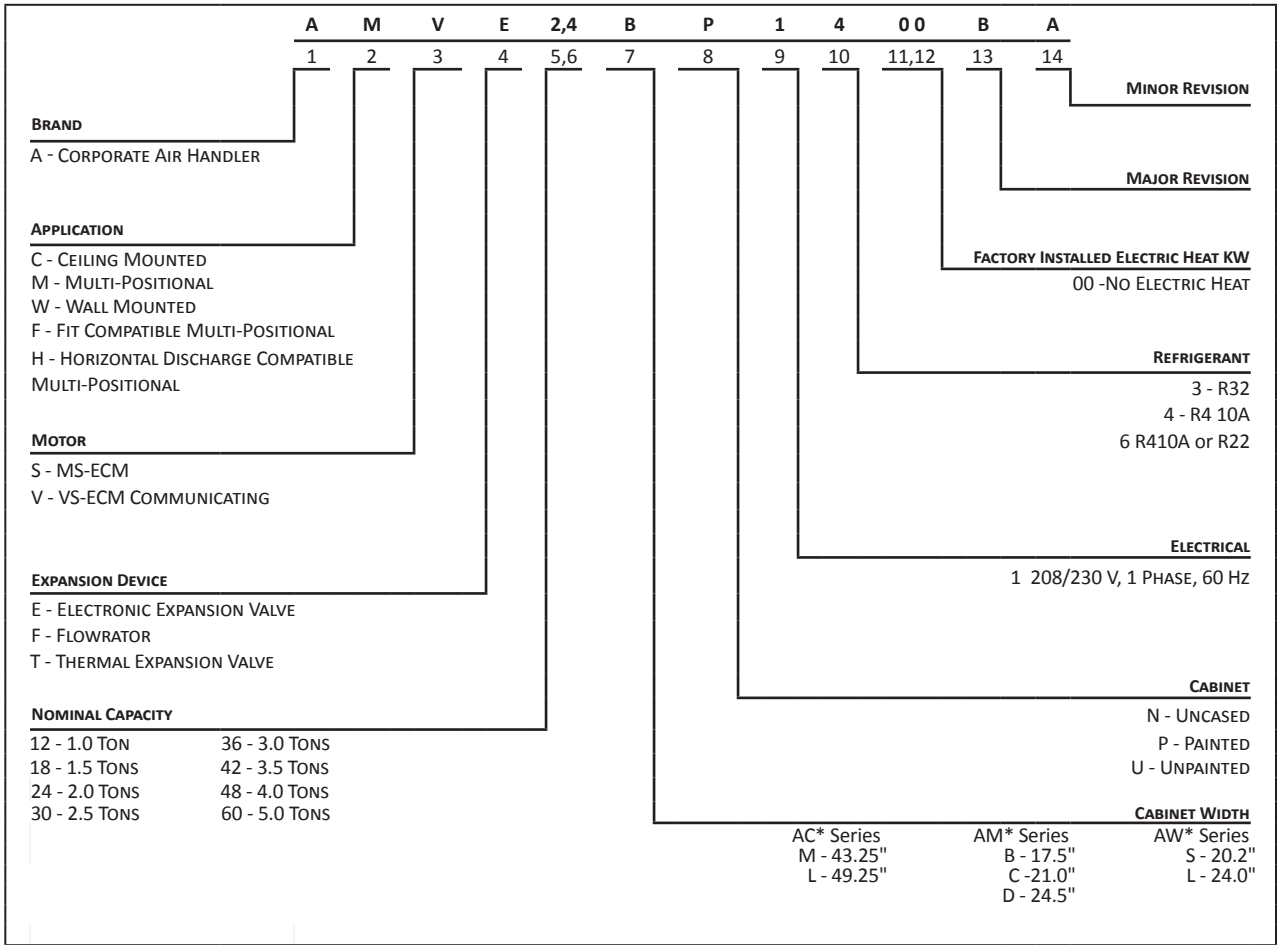


COMPANY WITH
QUALITY SYSTEM
CERTIFIED BY DNV GL
■ ISO 9001 ■



* Complete warranty details available from your local dealer or at www.goodmanmfg.com. To receive the 10-Year Parts Limited Warranty, online registration must be completed within 60 days of installation. Online registration is not required in California or Québec. The duration of warranty coverage in Texas and Florida differs in some cases.

NOMENCLATURE

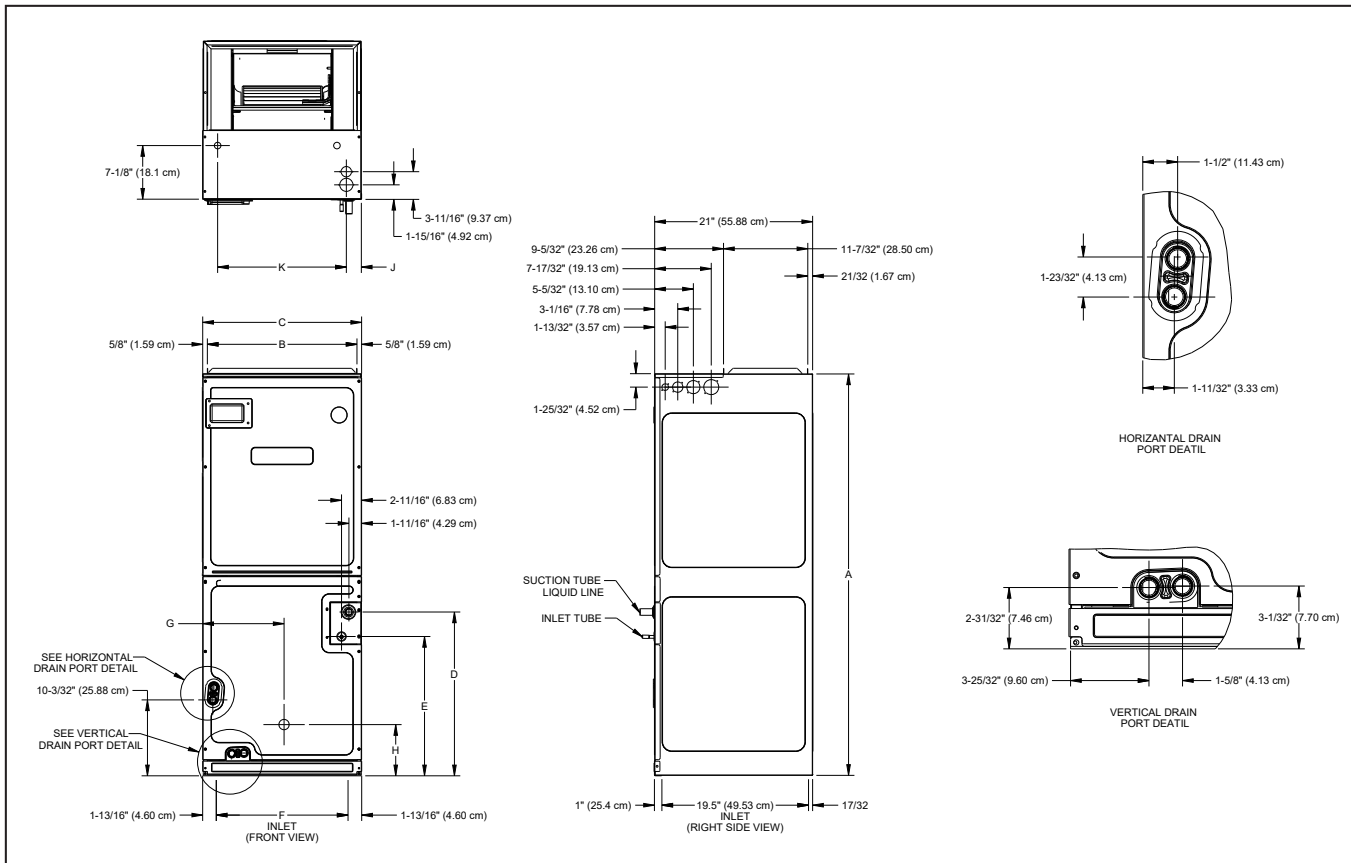


*Refer S&R Plate

	AMVE24 BP1400	AMVE36 CP1400	AMVE48 DP1400	AMVE60 DP1400
NOMINAL RATINGS				
Cooling (BTU/h)	24,000	36,000	48,000	60,000
CFM (High range)	1200/600	1700/800	1800/1350	2000/1600
BLOWER				
Diameter	10 $\frac{5}{8}$ "	10 $\frac{5}{8}$ "	11 $\frac{5}{8}$ "	11 $\frac{5}{8}$ "
Width	6"	10 $\frac{5}{8}$ "	10 $\frac{5}{8}$ "	10 $\frac{5}{8}$ "
COIL CONNECTION				
Liquid	$\frac{3}{8}$ "	$\frac{3}{8}$ "	$\frac{3}{8}$ "	$\frac{3}{8}$ "
Suction	$\frac{3}{4}$ "	$\frac{7}{8}$ "	$\frac{7}{8}$ "	$\frac{7}{8}$ "
Coil Drain Connection FPT	$\frac{3}{4}$ "	$\frac{3}{4}$ "	$\frac{3}{4}$ "	$\frac{3}{4}$ "
ELECTRICAL DATA				
Voltage	208/240	208/240	208/240	208/240
Electric Heat Capacity (kW)	3, 5, 6, 8, 10	5, 6, 8, 10, 15, 19	5, 6, 8, 10, 15, 20	5, 6, 8, 10, 15, 20, 25
Min Circuit Ampacity	4.9/4.9	6.5/6.5	8.6/8.6	8.6/8.6
Max. Overcurrent Device (Amps)	15/15	15/15	15/15	15/15
Minimum VAC	197	197	197	197
Maximum VAC	253	253	253	253
BLOWER MOTOR				
Full Load Amps (FLA)	3.9	5.2	6.9	6.9
Horsepower (HP)	$\frac{1}{2}$	$\frac{3}{4}$	1	1
SHIP WEIGHT (LBS.)	128	150	160	177

Note: Minimum Circuit Ampacity (MCA) and Maximum Overcurrent Protection (MOP) for blower without supplemental heat installed. Refer to unit nameplate and/or Heat Kit Data for specification with approved accessory heaters installed.

DIMENSIONS



MODEL	A	B	C	D	E	F	G	H
AMVE24BP1400	53 ⁷ / ₁₆	16 ³ / ₈	17 ¹ / ₂	20	21 ¹ / ₂	14 ¹ / ₈	9 ¹ / ₈	7 ⁵ / ₈
AMVE36CP1400	53 ⁷ / ₁₆	19 ⁷ / ₈	21	21 ¹³ / ₁₆	18 ⁵ / ₈	17 ¹¹ / ₁₆	10 ¹³ / ₁₆	6 ¹³ / ₁₆
AMVE48DP1400	53 ⁷ / ₁₆	23 ⁵ / ₁₆	24 ¹ / ₂	21 ¹ / ₂	18 ⁵ / ₁₆	21 ³ / ₁₆	12 ⁵ / ₈	6 ⁷ / ₈
AMVE60DP1400	58	23 ⁵ / ₁₆	24 ¹ / ₂	26 ⁵ / ₈	22 ⁵ / ₈	21 ³ / ₁₆	12 ⁵ / ₁₆	25 ¹ / ₂

MODEL	STAGE	AIRFLOW CFM								
		0.1	0.2	0.3	0.4	0.5	0.6	0.7	0.8	0.9
AMVE24BP1400-B*	High	700	690	690	685	680	670	665	660	655
	Low	520	505	495	490	470	455	445	435	425
AMVE36CP1400-B*	High	1190	1170	1165	1160	1145	1130	1120	1105	1100
	Low	820	810	795	785	765	740	730	720	710
AMVE48DP1400-B*	High	1445	1440	1430	1415	1405	1390	1380	1375	1370
	Low	880	875	870	870	860	845	840	835	830
AMVE60DP1400-B*	High	1645	1640	1640	1635	1630	1625	1620	1620	1615
	Low	1080	1075	1070	1070	1060	1055	1050	1050	1045

Note: During cooling operation outdoor will determine the indoor airflow

COOLING/HEAT PUMP AIRFLOW TABLE

MODEL	AIRFLOW LEVEL	CFM
AMVE24BP1400-B*	High	690
	Low	495
AMVE36CP1400-B*	High	1165
	Low	795
AMVE48DP1400-B*	High	1430
	Low	870
AMVE60DP1400-A*	High	1640
	Low	1070

HEAT KIT DATA

MODELS	SERVICE DISCONNECT	CIRCUIT 1 (208V/240V)			CIRCUIT 2 (208V/240V)			SINGLE-POINT KIT (208V/240V)	
		AMPS	MCA ¹	MOP ²	AMPS	MCA ¹	MOP ²	MCA ¹	MOP ²
AMVE24BP1400BA	No Breaker	0.0/0.0	4.9/4.9	15/15	---	---	---	---	---
HKTSN03X1		10.8/12.5	18.4/20.5	20/25	---	---	---	---	---
HKTSN05X1		17.3/20.0	26.5/29.9	30/30	---	---	---	---	---
HKTSN06X1		21.7/25.0	32.0/36.1	35/40	---	---	---	---	---
HKTSN08X1		28.9/33.3	41.0/46.5	45/50	---	---	---	---	---
HKTSN10X1		34.7/40.0	48.2/54.9	50/60	---	---	---	---	---
HKTSD05X1	Breaker	17.3/20.0	26.5/29.9	30/30	---	---	---	---	---
HKTSD08X1		28.9/33.3	41.0/46.5	45/50	---	---	---	---	---
HKTSD10X1		34.7/40.0	48.2/54.9	50/60	---	---	---	---	---
AMVE36CP1400BA	No Breaker	0.0/0.0	6.5/6.5	15/15	---	---	---	---	---
HKTSN05X1		17.3/20.0	28.0/31.5	30/35	---	---	---	---	---
HKTSN06X1		21.7/25.0	34.0/37.8	35/40	---	---	---	---	---
HKTSN08X1		28.9/33.3	42.6/48.2	45/50	---	---	---	---	---
HKTSN10X1		34.7/40.0	49.8/56.5	50/60	---	---	---	---	---
HKTSN15X3 [^]		0.0/0.0	6.5/6.5	15/15	30/34.6	37.5/43	40/45	---	---
HKTSN15XA/B	34.7/40.0	49.8/56.5	50/60	17.3/20.0	21.7/25.0	25/25	71.5/81.5	80/90	
HKTSD05X1	Breaker	17.3/20.0	28.0/31.5	30/35	---	---	---	---	---
HKTSD08X1		28.9/33.3	42.6/48.2	45/50	---	---	---	---	---
HKTSD10X1		34.7/40.0	49.8/56.5	50/60	---	---	---	---	---
HKTSD19CA/B		34.7/40.0	49.8/56.5	50/60	34.7/40	43.4/50.0	45/50	93.2/106.5	100/110
HKTSD20DA/B		0.0	8.6	15	30	38	40	---	---
AMVE48DP1400BA	No Breaker	0.0/0.0	8.6/8.6	15/15	---	---	---	---	---
HKTSN05X1		17.3	30.3	35	---	---	---	---	---
HKTSN06X1		21.7	36	40	---	---	---	---	---
HKTSN08X1		28.9	45	45	---	---	---	---	---
HKTSN10X1		34.7	52	60	---	---	---	---	---
HKTSD05X1	Breaker	17.3	30.3	35	---	---	---	---	---
HKTSD08X1		28.9	45	45	---	---	---	---	---
HKTSD10X1		34.7	52	60	---	---	---	---	---
HKTSD15X3 [^]		34.7	52	60	17.3	21.7	25	73.6	80
HKTSD15XA/B		34.7	52	60	34.7	43.3	45	95.3	100
HKTSD20DA/B		0.0	8.6	15	30	38	40	---	---
HKTSD25DA/B		0.0	8.6	15	38	47	50	---	---
AMVE60DP1400BA	No Breaker	0.0/0.0	8.6/8.6	15/15	---	---	---	---	---
HKTSN05X1		17.3	30.3	35	---	---	---	---	---
HKTSN06X1		21.7	36	40	---	---	---	---	---
HKTSN08X1		28.9	45	45	---	---	---	---	---
HKTSN10X1		34.7	52	60	---	---	---	---	---
HKTSD05X1		Breaker	17.3	30.3	35	---	---	---	---
HKTSD08X1	28.9		45	45	---	---	---	---	---
HKTSD10X1	34.7		52	60	---	---	---	---	---
HKTSN15X3 [^]	34.7		52	60	17.3	21.7	25	73.6	80
HKTSN20X3 [^]	34.7		52	60	34.7	43.3	45	95.3	100
HKTSN15XA/B	52		73.6	80	35	43.3	45	117	125
HKTSD20DA/B	0.0		8.6	15	30	38	40	---	---
HKTSD25DA/B	0.0		8.6	15	38	47	50	---	---

¹ Minimum Circuit Ampacity (Heater Amps + Motor Amps) X 1.25

² Maximum Overcurrent Protection = 2.25 X Motor Amps + Heater Amps

³ Notation is correct as XB because technically the 240V heater kit application can be used here without any issues.

[^] Three-phase Heater Kits (Circuit 1: Single-phase for Air Handlers Circuit 2: Three-phase for Heater Kits)

Note: The 208 or 240 in the heat kit part number field is for clarification of the nominal voltage for this model.

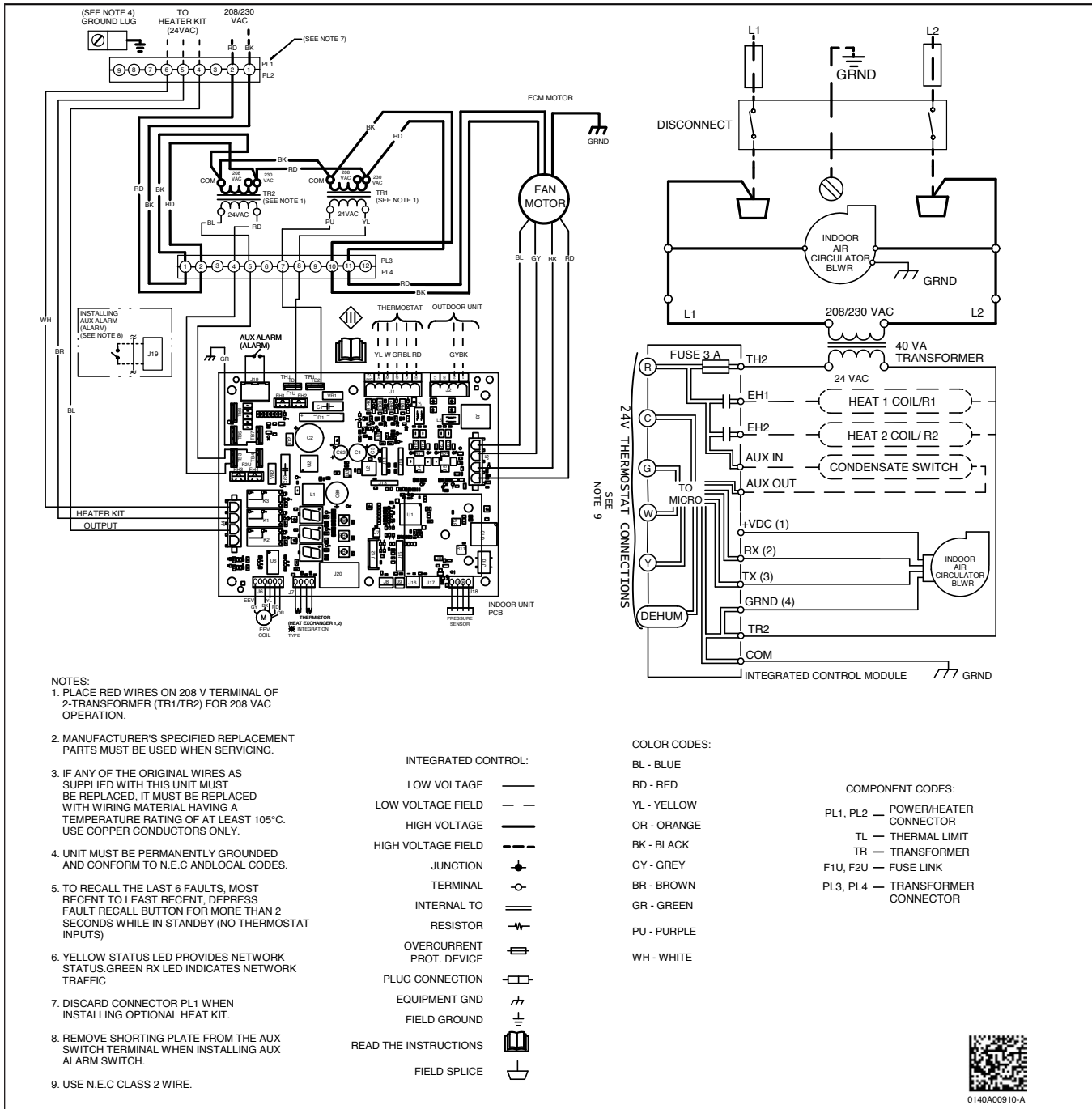
--- indicates Not Required

HEATING KW CORRECTION FACTOR

SUPPLY VOLTAGE	240	230	220	210	208
CORRECTION FACTOR	1.00	0.92	0.84	0.77	0.75

Multiply the 240-volt heating capacity by correction factors.

WIRING DIAGRAM



Wiring is subject to change. Always refer to the wiring diagram on the unit for the most up-to-date wiring.

	WARNING	High Voltage: Disconnect all power before servicing or installing this unit. Multiple power sources may be present. Failure to do so may cause property damage, personal injury, or death.	
--	----------------	---	--



ACCESSORIES

DOWNFLOW KITS

DFK-B	DFK-C	DFK-D
AMVE24BP1400	AMVE36CP1400	AMVE48DP1400
		AMVE60DP1400

DRAIN PORT PLUG

Kit Number	Description	Application
DPK1	Side Drain Port Plug	All Models

CONDENSATE MANAGEMENT KITS*

CMK0008	CMK0009	CMK0010	CMK0011
AMVE24BP1400	AMVE36CP1400	AMVE48DP1400	AMVE60DP1400

*For Horizontal application only.

MERV 15 AIR CLEANERS

CHASSIS	DAIKIN PREMIUM AIR CLEANER	FILTER SIZE	REPLACEMENT FILTER PART #
B	DV15-2117-AB	21"x17"	0160M00013
C	DV15-2121-AC	21"x21"	0160M00014
D	DV15-2124-AD	21"x24"	0160M00015

PERMANENT 1" FILTERS

CHASSIS	PART#	SIZE
B	ALFH16201E	16.0" x 20.0"
C	ALFH1912201E	19.5" x 20.0"
D	ALFH20231E	23.0" x 20.0"

SINGLE POINT WIRING KITS (SPW-01)

MODEL	SPWK-B	SPWK-C	SPWK-D
HKTSD15XA	AMVE24BP1400B*	AMVE36CP1400B*	AMVE48DP1400B*
HKTSD15XB			AMVE60DP1400B*
HKTSD19CA		AMVE36CP1400B*	
HKTSD19CB			
HKTSD20DA			AMVE48DP1400B*
HKTSD20DB			AMVE60DP1400B*
HKTSD25DA			AMVE60DP1400B*
HKTSD25DB			